

National Truck Parking

6200 Old Soutel CT

Jacksonville, Florida



YARD OVERVIEW

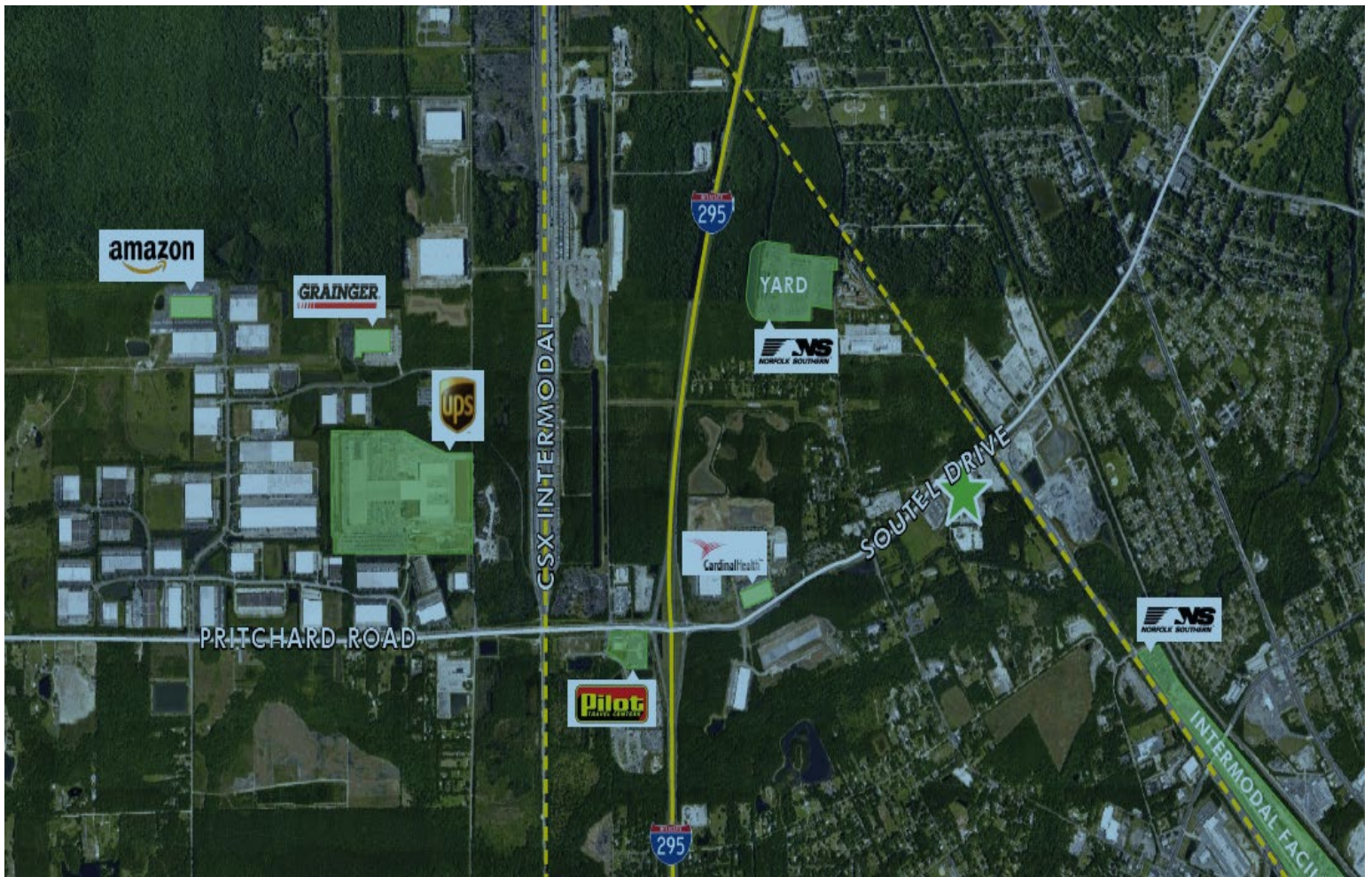
Professionally managed truck and trailer parking facility with 9 acres of fenced and gated parking spaces in a strategic location adjacent to extensive industrial development in NW Jacksonville. The yard is located between the CSX Intermodal and the NS Intermodal. The Yard is zoned and permitted, with on-site water detention in place. Access managed by key code and app entry and exit. Additional security protection provided via on-site cameras.

FEATURES

- 9 Acre Parking Yard
- Compacted Stone Surface
- Fully Fenced and Gated
- Zoned and Permitted
- Water Detention in Place
- Truck/Trailer/Container
- Lighted Parking
- Lease Rate: Per Proposal
- Strategic NW JAX Location
- Professionally Managed

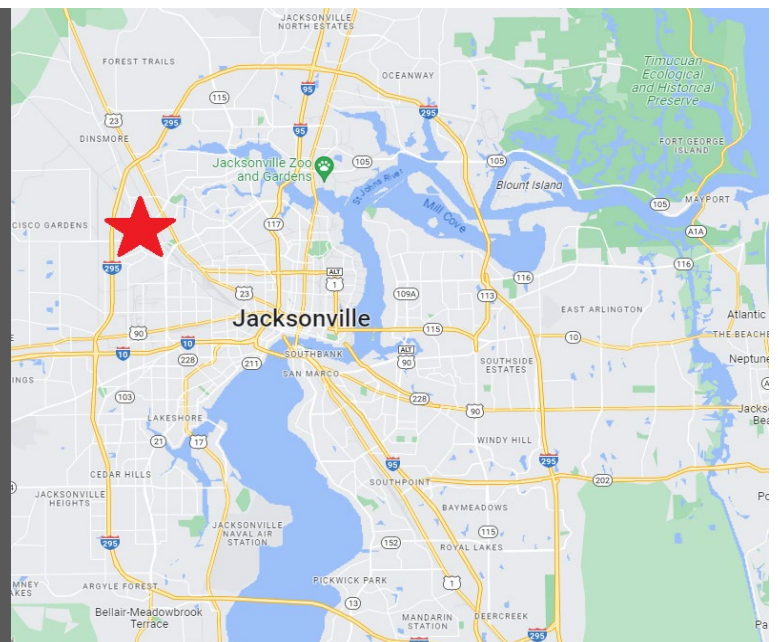


For Leasing Information Contact
J. D. Salazar 630-747-4516
jd@championre.com



STRATEGIC JAX LOCATION

- 9-acre truck, trailer container parking
- 24-hour, 365 days per year access
- Secure fenced and gated parking
- Next to Class A Development
- Professionally Managed



For Leasing Information Contact
 J. D. Salazar 630-747-4516
jd@championre.com